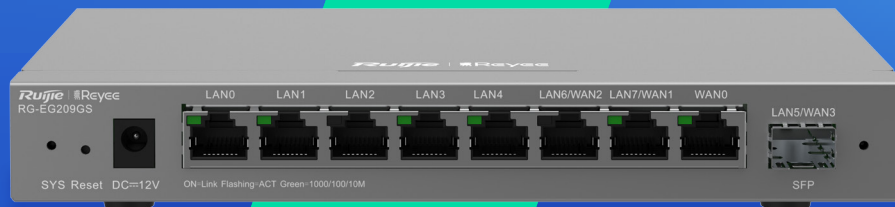


RG-EG209GS

Reyee 9-Port Gigabit SFP Cloud Managed Router

DATASHEET



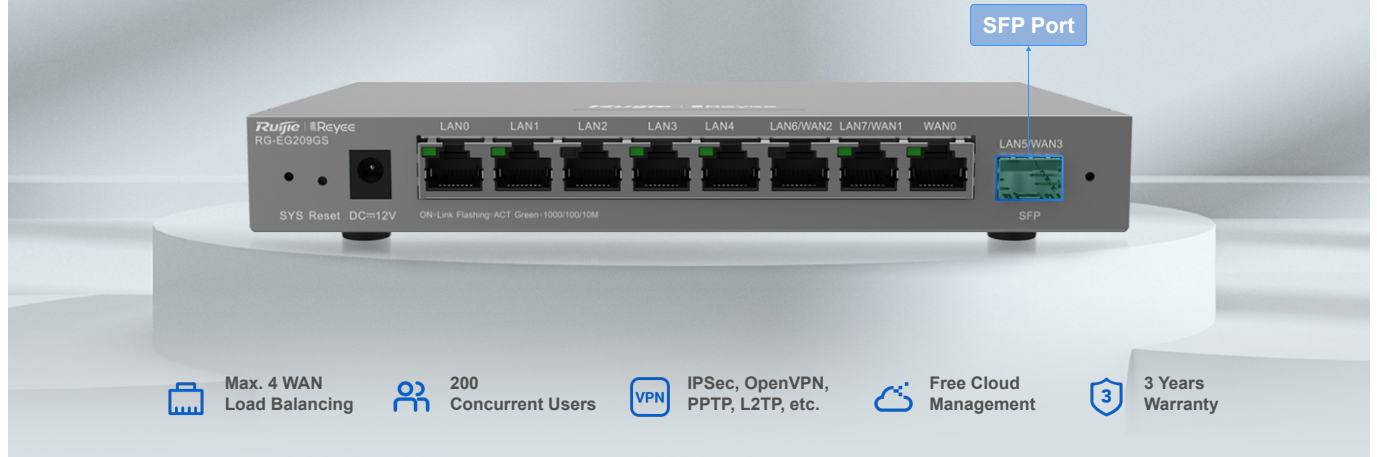
Highlights

- LAN/WAN switchable SFP port for adding optical fiber connectivity
- User friendly configuration, easy to learn
- Intelligent load balancing and link redundancy between multiple WAN ports
- New efficient way of bandwidth management based on application and user
- Customize portal page, what you see is what you get

Highlight Features

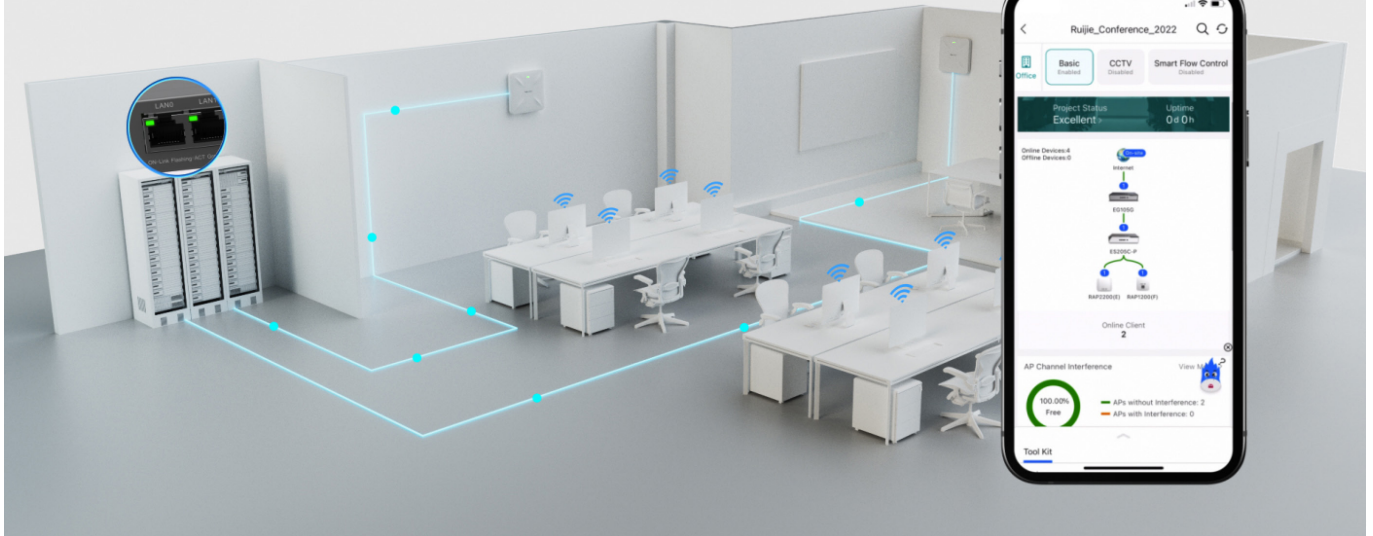
Simplified and Powerful

LAN/WAN switchable SFP port for adding optical fiber connectivity.



User Friendly Configuration, Easy to Learn

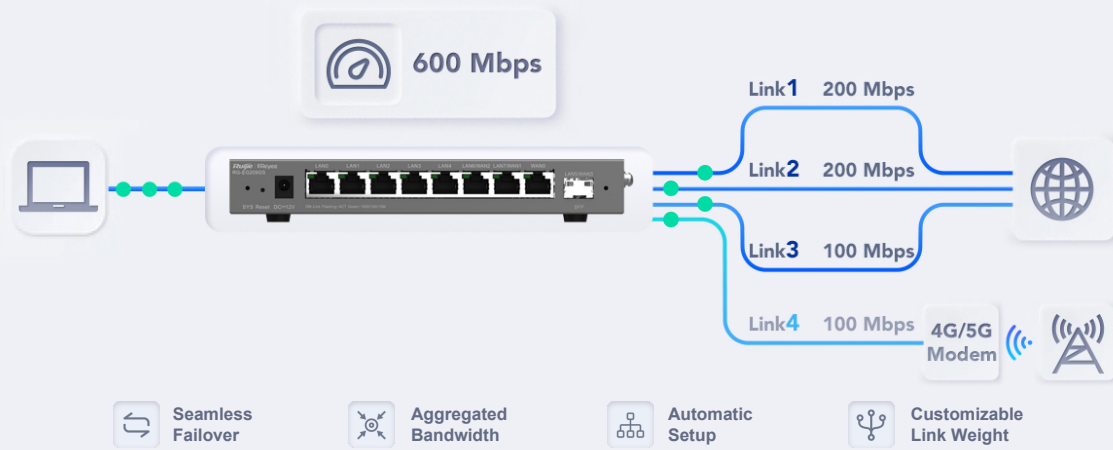
Even for advanced functions, set-up can be easily done by Ruijie Cloud APP.



Highlight Features

Unbreakable Multi-WAN Internet

Intelligent load balancing and link redundancy between multiple WAN ports



New Efficient Way of Bandwidth Management

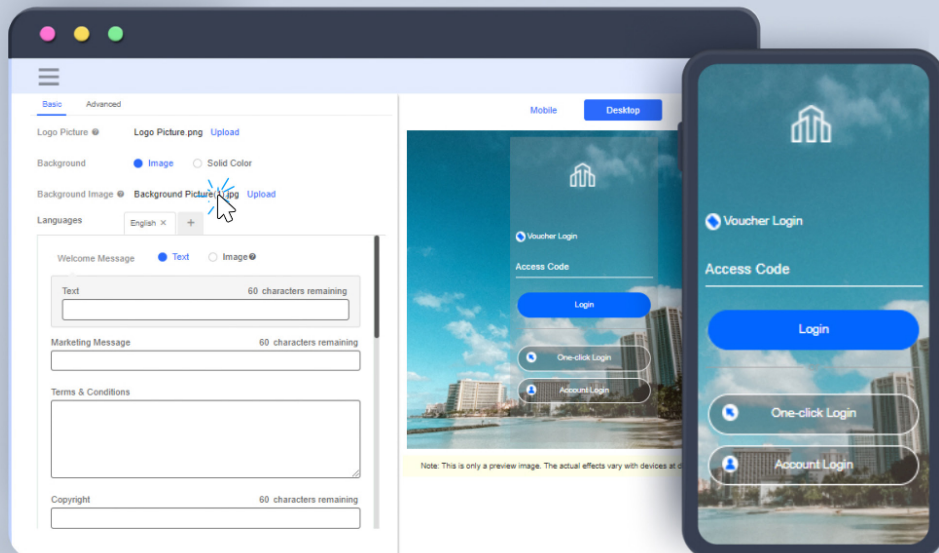
Application Based Bandwidth Management

	Video Conference High-priority 20 Mbps
	HD Video 5 Mbps
	Social Media 5 Mbps

User Based Bandwidth Management

	User Group Management 50 Mbps
	User Group Finance High-priority 30 Mbps
	User Group Other staff 100 Mbps

Customize Portal Page, What You See is What You Get



Highlight Features

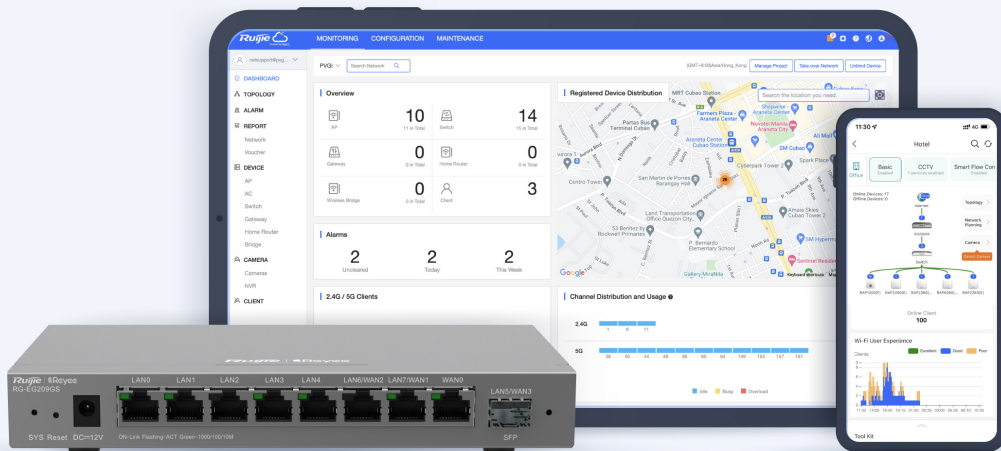
Secure Access Internal Device Remotely

No matter dynamic or even private IP on gateway WAN port,
Securely monitoring the NVR/IPC/Internal Server anytime from anywhere .



Cloud, Make Your Business Easy

- Self-organizing Network
- Centralized Network Management
- Scenario Based Configuration
- Cloud Portal Authentication
- Remote Monitoring and Maintenance



Specifications

Model	RG-EG209GS
Basic	
Number of Fixed WAN Ports	1
Number of Fixed LAN Ports	5
Number of WAN Ports	4
Number of LAN Ports	8
WAN Port Rate	1x10/100/1000BASE-T Ports
LAN Port Rate	7x10/100/1000BASE-T Ports 1 × 1GBASE-X SFP Ports
Number of LAN/WAN Ports	3
Number of 10/100/1000BASE-T Ports	8
Number of 10/100/1000/2500BASE-T Ports	N/A
Number of 100/1000/2.5G/5G/10GBASE-T Ethernet port	N/A
Number of 1 Gbps Optical Ports (SFP)	1
Number of 10 Gbps Optical Ports (SFP+)	N/A
Total Number of RJ45 Ports	8
Total Number of Optical Ports	1
Management Port	N/A
PoE	N/A
PoE Standard	N/A
Max. PoE Power Budget	N/A
Max. Number of PoE Ports	N/A
Max. Power Output per PoE Port	N/A
Dimensions (W x D x H)	202mm x 108mm x 28mm

Model	RG-EG209GS
Net Weight	0.98Kg
Hardware specification	
Flash Memory	32MB
SDRAM	256MB
CPU	880Mhz*2
Mounting	Desk-type
LEDs	System: SYS(Green) Per RJ45 Ports: LINK/ACT(Green)
Reset Buttons	Yes
DC Power Connector Size	Outer Diameter: 6.0 mm Inner Diameter: 2.0 mm Length: 10 mm
Cooling	Natural cooling
Number of Fans	Fanless
Airflow	#N/A
Fan Status Monitoring	N/A
Operating Temperature	0~40°C
Storage Temperature	-40~70°C
Operating Humidity	10%~90%(non-condensing)
Storage Humidity	5%~95%(non-condensing)
IP Rating	N/A
Power Supply Surge Protection	Common Mode: ±4KV Differential mode: ±4KV
Port Surge Protection	Common Mode: ±4KV
Recommended Concurrent Clients	200
Hard Disk Drive	N/A

Model	RG-EG209GS
USB	N/A
Max. Power Consumption	<18W
PoE	N/A
Max. PoE Power Budget	N/A
Max. Number of PoE Ports	N/A
Max. Power Output per PoE Port	N/A
PoE Power Pins	N/A
Power Supply	<p>AC input</p> <p>Rated voltage range: 100V to 240V Maximum voltage range: 90V to 264V Frequency: 50/60 Hz Rated current: 0.5A</p> <p>Adapter output</p> <p>Rated voltage range: 12V DC Rated current range: 1.5A</p>
Internet Connection Type	PPPoE DHCP Static IP
Access Mode Auto Detection	Yes
Software Features	
PPPoE Username and Password Learning	Yes
Throughput	1000Mbps(Turbo Mode) 600Mbps(Normal Mode)
PPPoE Client	Yes
PPPoE Server	Yes
Max. Number of PPPoE Accounts	100
PPPoE Concurrent Connection Limit	65
IP Address Routing based by ISP	No

Model	RG-EG209GS
WAN IP Conflict Avoidance	Yes
MAC Address Cloning	Yes
VLAN	Yes
Max. Number of VLANs	32
Port-based VLAN	Yes
Super VLAN	No
VLAN Priority	Yes
Bandwidth Aggregation	Yes
default with Multi VLAN	No
In-Room Screen Sharing	No
Port Mapping	Yes
Number of Port Mapping Rule	256
NAT Loopback	Yes
Link Aggregation	No
LAN Link Aggregation	No
AC Mode	Yes
Behavior Management	Yes
Cloud Print	Yes
Application Identification	Yes
Application Priority	Yes
Application Cache	No
Application Control (Yes Time/IP-based Policy)	Yes
Traffic Audit	Yes
Anti Network Sharing(Modify TTL)	Yes

Model	RG-EG209GS
Network-wide Client Management	Yes
Network Supervision	No
Log Retention	No
Log Audit	Yes
Log Upload	Yes
Log Server	Yes
Maintenance and Fault Diagnosis	Yes
Web Authentication	No
SMS Authentication	Yes
Password-based Authentication	Yes
Portal Authentication	Yes
802.1X	Yes
One-Click Authentication	Yes
Local Portal Authentication	Yes
Voucher Authentication on Ruijie Cloud	Yes
Local Mode of Authentication on Ruijie Cloud	Yes
Custom Portal	Yes
RADIUS Client	Yes
RADIUS Proxy	Yes
Support Authentication Via Radius	Yes
Support duration/traffic Accounting Via Radius	Yes
Support Flowctrl Authorization Via Radius	Yes
Support User Group Authorization Via Radius	Yes

Model	RG-EG209GS
Support duration/traffic quota Via Radius	Yes
Support PAP Authentication	Yes
Support CHAP/MS-CHAPV1/MS-CHAPV2 Authentication	Yes
Support MAC Authentication for Radius	Yes
Third-Party API Integration	Yes
IPTV	Yes
L2TP VPN	Yes
PPTP VPN	Yes
IPsec VPN	Yes
OpenVPN	Yes
Number of Universal VPN Accounts for L2TP, PPTP, and OpenVPN	100
IPSec VPN Performance (bi-direction, Typical Packets) IPV4	28Mbps
L2TP VPN Performance (bi-direction, Typical Packets)	190Mbps
PPTP VPN Performance (bi-direction, Typical Packets)	190Mbps
OPENVPN Performance (bi-direction, Typical Packets)	20Mbps
Number of IPsec VPN Tunnels	8
Number of OpenVPN Tunnels	16
Number of L2TP VPN Tunnels	8
Number of PPTP VPN Tunnels	8
VPN HQ/Branch Interconnection	Yes
EasyVPN 1.0	No
Number of EasyVPN Tunnels	N/A

Model	RG-EG209GS
SSL VPN	N/A
Number of SSL VPN Tunnels	N/A
RIPng	Yes
RIP	Yes
OSPFv2	Yes
OSPFv3	Yes
WAN Failover	Yes
Static Routing	Yes
Equal Cost Multi-Path Routing	N/A
Policy-Based Routing (PBR)	Yes
Interface Active/Standby Switchover	Yes
WAN Load Balancing	Yes
IP-based Load Balancing	Yes
Session-based Load Balancing	Yes
Real-Time Load-based Load Balancing	Yes
DHCP Server	Yes
DHCP Client	Yes
DHCP Snooping	N/A
DHCP Relay	N/A
DNS Client	Yes
DNS Server	Yes
DNS Proxy	Yes
NTP Client	Yes
Oray DDNS	N/A
DynDNS	Yes

Model	RG-EG209GS
No-IP DDNS	Yes
Ruijie DDNS	Yes
3322 DDNS	Yes
Aliyun DDNS	Yes
Cloudflare	Yes
NAT	Yes
NAPT	Yes
UPnP	Yes
SNMP	Yes
ACL	Yes
Time-based ACL	Yes
IPv6 ACL	Yes
Block LAN/WAN Ping	Yes
IP-MAC Binding	Yes
MAC Address Filtering	Yes
Session Limit	Yes
Fraggle Attack Defense	Yes
Teardrop Attack Defense	Yes
Malformed Packet Attack Defense	Yes
Land Attack Defense	Yes
Smurf Attack Defense	Yes
SYN Flood Attack Defense	Yes
Security Zone	Yes
Security Logs	Yes
Upgrade via App	Yes

Model	RG-EG209GS
Reboot via App	Yes
Scheduled Reboot	Yes
HTTPS Login	Yes
Upgrade via eWeb	Yes
Upgrade via Ruijie Cloud	Yes
Configuration Backup	Yes
Factory Reset	Yes
Language	Yes
Self-Organizing Network (SON)	Yes
Device Management	Yes
No. of Devices Managed in Router Mode	150
No. of Devices Managed in AC Mode	500
Wireless Intelligent Optimization (WIO)	Yes
Flow Control	Yes
NAT ALG	Yes
anyIP	N/A
Remote Check on App	Yes
ARP Table Size	1024
ARP Binding	Yes
Ping	Yes
Blocklist and Allowlist	Yes
WAN/LAN Conversion	Yes
Link Detection	Yes
Multi WAN with same subnet	Yes
Max. Number of Concurrent Connections	60000

Model	RG-EG209GS
SIP ALG	Yes
SD-WAN	Yes
Number of SD-WAN Tunnels	24
Number of branches supported by SD-WAN	8
SD-WAN performance	80Mbps
IPv6	Yes
App Management	Yes
Web Management	Yes
Ruijie Cloud Management	Yes
Stateful Firewall	Yes
Website filtering	Yes
Website Auditing	Yes
Package Contents	
Power Adapter	Yes
Mounting Brackets	Wall-mount and Desk-type

Ruijie | Rcycc

 **Redefine your easy network**

Copyright ©2000-2024 Ruijie Networks Co., Ltd. All rights reserved.

No part of this document may be reproduced or transmitted in any form or any means without prior written consent of Ruijie Networks Co., Ltd.

Notice

This content is applicable only to regions outside the China mainland. Ruijie Networks Co., Ltd. reserves the right to interpret this content.

The information contained herein is subject to change without notice. Nothing herein should be construed as constituting an additional warranty. Ruijie Networks Co., Ltd. shall not be liable for technical or editorial errors or omissions contained herein.



Ruijie Networks Co., Ltd.
Website: <https://reyee.ruijie.com/en-global>